



### A reminder for parents of children who are learning at home

#### **Reporting pupil absences when learning at home or onsite**

If your child is sick and cannot join in with their online learning, please call the school office as normal so we can record this on our registers.

#### **Check in calls from school staff**

We will be continuing to make our weekly phone calls to check in with you all so please do answer the phone to a withheld number as it is likely to be one of us!

#### **Remote Learning During Lockdown - Home School Agreement**

Remember to check your email with useful guidelines in order to keep the children and adults safe while they are online.



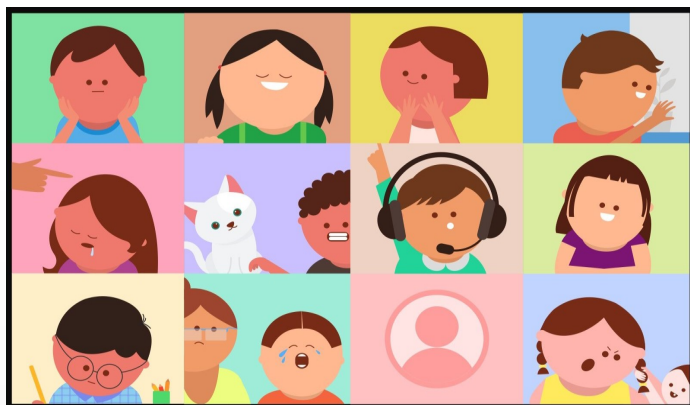
Kathleen was very touched to receive this beautiful penholder from Moriom in Y6 Alfred Russel Wallace!

#### **We received great feedback from some of the parents on the Community Broadband Project:**

"It has been very helpful for my child to do her online learning during this lockdown."

"I did not have internet or access to laptop so this project has helped my child complete her online learning."





Y5 have been learning the bus stop method this week and have been absolutely brilliant in their online learning. This is Ikram's working out on the right and Rotbar's below - great job!

Handwritten work by Ikram showing division and multiplication tables.

$93 \div 3 = 31$       3x table

$3 \times 0 = 0$   
 $3 \times 1 = 3$   
 $3 \times 2 = 6$   
 $3 \times 3 = 9$   
 $3 \times 4 = 12$   
 $3 \times 5 = 15$

$50 \div 5 = 10$       5x table

$5 \times 0 = 0$   
 $5 \times 1 = 5$   
 $5 \times 2 = 10$   
 $5 \times 3 = 15$   
 $5 \times 4 = 20$   
 $5 \times 5 = 25$

Handwritten work by Rotbar showing division problems and a challenge section.

1)  $45 \div 3 = 15$       Maths 13/01/21

2)  $52 \div 4 = 13$

3)  $75 \div 3 = 25$

Challenge:

1)  $72 \div 3 = 24$

2)  $56 \div 4 = 14$

3)  $36 \div 2 = 18$

4)  $65 \div 5 = 13$

5)  $72 \div 2 = 36$

Handwritten work by Ikram showing division problems and a challenge section.

13/01/2021      Ikram

1)  $45 \div 3 = 15$       2)  $36 \div 2 = 18$

3)  $75 \div 3 = 25$       4)  $65 \div 5 = 13$

5)  $72 \div 2 = 36$       6)  $60 \div 5 = 12$

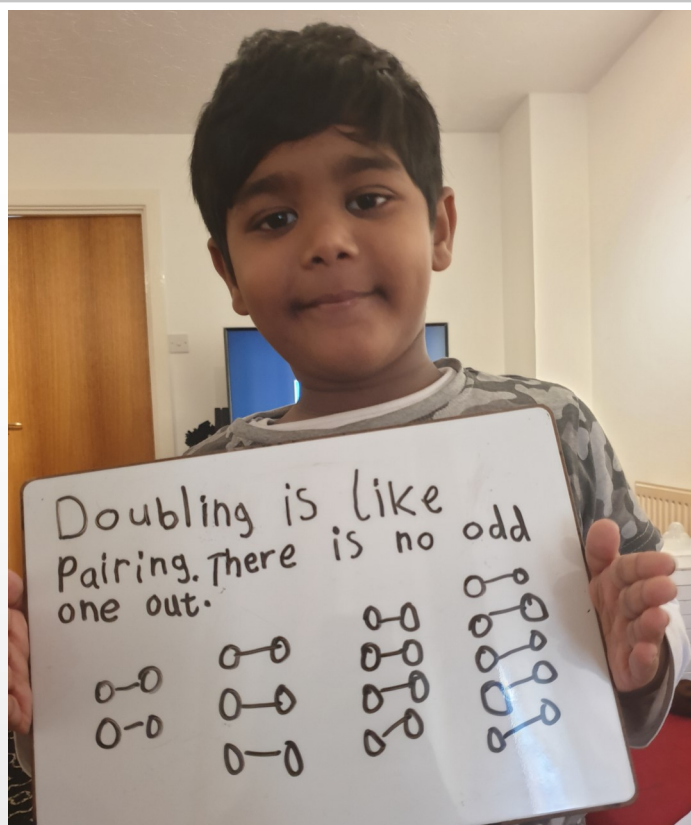
7)  $60 \div 4 = 15$       8)  $68 \div 4 = 17$

9)  $94 \div 2 = 47$       10)  $84 \div 7 = 12$

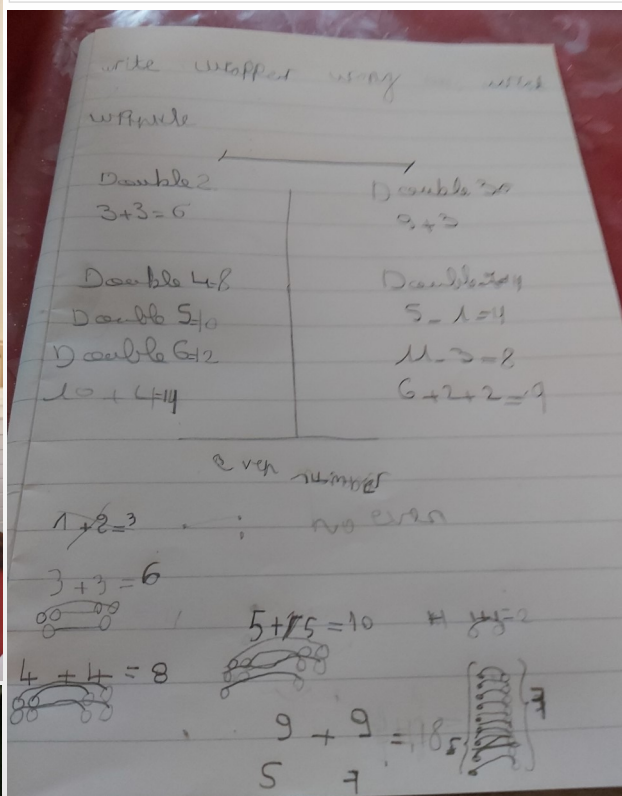
Challenge:

$72 \div 3 = 24$   
 $72 \div 2 = 36$

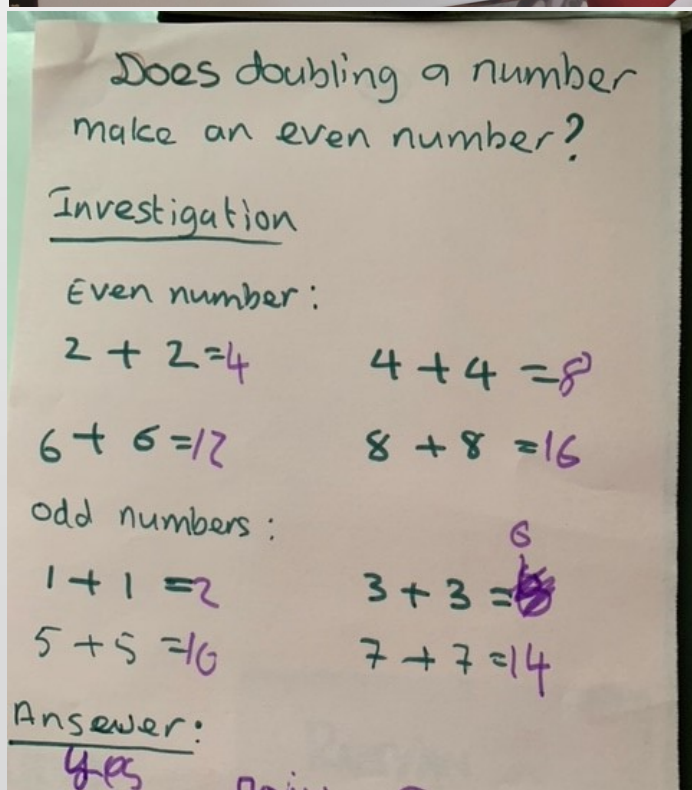
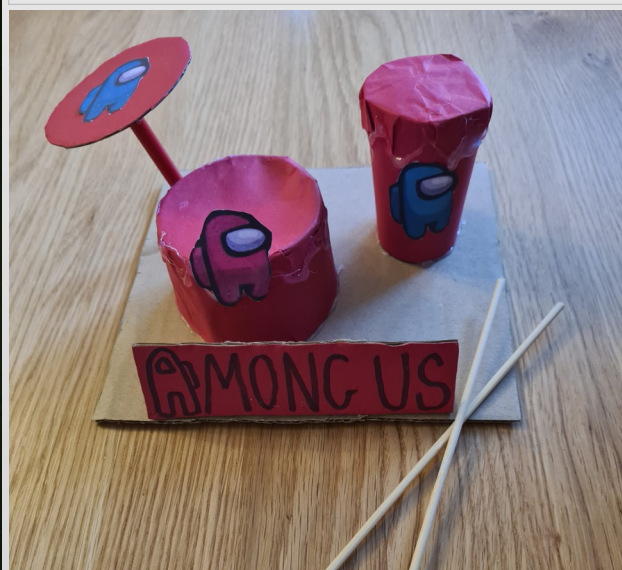




Y2 have been waking up their brains every morning with quick maths - many children have been sending brilliant examples of learning. Here are some examples of quick doubling work from Ayyub, Israe and Rayyan.



Iman from Y3 Ella Fitzgerald class made a drum set at home as part of his music learning.





### Term Dates 2020-2021

**School open: Monday 2 November – Thursday 17 December 2020**

INSET (school closed): Friday 4 December 2020

INSET (school closed): Friday 18 December 2020

Christmas Holiday: Monday 21 December – Friday 1 January 2021

**School open: Monday 4 January – Thursday 11 February 2021**

INSET (school closed): Friday 12 February 2021

Half term: Monday 15 February – Friday 19 February 2021

**School open: Monday 22 February – Friday 26 March 2021**

Spring Holiday: Monday 29 March – Friday 9 April 2021

**School open: Monday 12 April – Friday 28 May 2021**

May Bank Holiday: Monday 3 May 2021

Polling Day (school closed): Thursday 6 May 2021

Half term: Monday 31 May – Friday 4 June 2021

**School open: Monday 7 June – Friday 16 July 2021**

The school will be closed on Eid celebration days:

Eid-ul-Fitr: TBC 12 May or 13 May 2021

Eid-ul-Adha: Monday 19 July and Tuesday 20 July 2021

### Entrance & Exit Times

**Please ensure your children are through the allocated gate in time**

Nursery: nursery gate between 9:00—9:15 am & 3:00—3:15 pm

Reception: fire engine entrance between 9:00—9:15 am & 3:00—3:15 pm

Year 1: pupil entrance between 9:00—9:15 am & 3:00—3:15 pm

Year 2: main entrance between 9:00—9:15 am & 3:00—3:15 pm

Year 3: fire engine entrance between 9:00—9:15 am & 3:15—3:30 pm

Year 4: car park entrance between 9:00—9:15 am & 3:15—3:30 pm

Year 5: pupil entrance between 9:00—9:15 am & 3:15—3:30 pm

Year 6: main entrance between 9:00—9:30 am & 3:15—3:30 pm

(For the gates that have more than one year group, both will come in at the same time, one on each side of the entrance.)

### Coffee Mornings - Every Thursdays

Please join our virtual (Zoom) Coffee morning on **Thursdays at 10am.**

It's a great opportunity to see each other and catch up with what is happening around our local community.

Join Zoom Meeting:

<https://letta-org-uk.zoom.us/j/83969489106?pwd=MDIzUGNsWIVxajFsOGhpS24veDNIUT09>

**Meeting ID:** 839 6948 9106 **Passcode:** 075628

If you need any support with joining the virtual Coffee morning please contact Chanel or Kulsuma via the school office.

