

Link to Twitter:

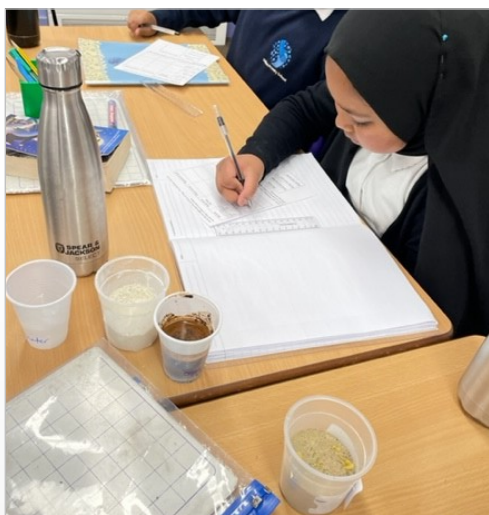
[@stebon\\_primary](https://twitter.com/stebon_primary)



## Newsletter

2021-22  
Issue 18, 28th  
January 2022

Well done to **YR Vincent Van Gogh** class for **97.9%** attendance this week!



Year 5 Martin Luther King class used their states of matter knowledge and understanding of mixtures to investigate the best methods to separate mixtures. Ask them if they used a sieve, filtering or evaporation to separate their mixtures!



### **Save the Date: Shaping Stebon's Future' Tuesday 1st Feb**

It's that time of year where we gather together to ask for parents' views on how well they think things are going at our school & seek your ideas for things to do to improve further - it's the annual ...

'Shaping Stebon's Future' conference!

Last year's conference was forced onto zoom. This year we are hoping to hold it in person in our training studio.

**Date: Tuesday 1 February**

**Time: 5-6pm**

**Where: Stebon School's training studio (please arrive via the main school reception desk)**

**Refreshments?: Absolutely**

It would be great to see as many parents there as possible - even if it means we have to move into the hall!

### **Parent Governor Election**

As we have received more than two nominations for the role of Parent Governor, an election will be necessary. Ballot papers with instructions on voting will be sent home with children on Tuesday 1st February. The **voting period will be from Wednesday 2 February to Friday 11 February, 3:30pm**. Please find information about each of our parent nominees on the second page of this newsletter.

Votes will be counted from 4pm on Friday 11 February and results will be announced after half term.



**Super Saturday School  
is now FULL!**

We have **NO** spaces left but we have a waiting list for those who have missed out.

Children's Mental Health Week is taking place on **7-13 February 2022**.

This year's theme is **Growing Together**. We will be encouraging children (and adults) to consider how they have grown, and how they can help others to grow.

### **Nursery Open Evening: Thursday 3 February**

Come along to our Nursery open evening on Thursday to find out about our great provision. We will be able to answer any questions and give you guidance on admissions.



### Nominee 1: Abul Hasan Chowdhury



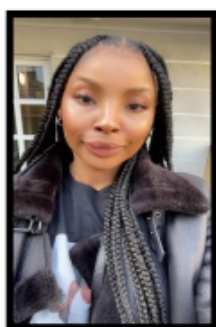
I would like to be a parent governor because:

I believe I can bring positive attitude to the governing board. I am passionate about making real changes in the community through education; I take huge interest in my only child's upbringing and her education.

I could have a good influence if I become part of the governing board. I am very much involved in our local community, mosque, and other aspects of our social life. I am confident that I will bring a lot of enthusiasm and commitment to the team. I have worked in different organisations in my career as part of a team and I function very well on my own.

---

### Nominee 2: Rochelle Robb



I would like to be a parent governor because:

Education is a valuable resource that helps us to grow and develop in so many areas; academically and socially. As a parent of a son in Secondary School and a daughter in her first year of school, I feel that I will have a variety of experiences as a parent of school age children that I could share with the board, the school and pupils whilst contributing to enhancing the education at Stebon.

Stebon is very warm and welcoming and I would like to build on the community atmosphere and be a voice for parents. Being a teacher myself and a Senior Leader in Education with an EYFS specialism, I feel I have a good understanding of the structure and procedures that schools undergo and feel I could provide support in many areas of school life and provide a well-rounded perspective. I am passionate and dedicated and if appointed will whole-heartedly support and build upon the amazing work already happening at Stebon.



### This week's Lexia Superstars!

The children that have achieved certificates this week are.... \*cue drumroll\*

Maryam Sufian in Y3 Ravi Shankar class  
Ifra Kazi in Y3 Beethoven class  
Tanisha Chowdhury in Y3 Beethoven class  
Shahan Tofadar in Y3 Beethoven class  
Iqra Ahmed in Y3 Beethoven class  
Mohammad Aryan Khan in Y3 Beethoven class  
Rehan Islam in Y6 Joy Adamson class  
Sayema Aktar in Y6 Joy Adamson class  
Renae Haywood in Y6 Alfred Russel Wallace class  
Anisa Begum in Y6 Alfred Russel Wallace class

We'd like to give a MASSIVE round of applause to these children for using Lexia regularly!

Big Garden Birdwatch is here! If you've never taken part before, it's really easy to do. Simply:

- Pick a time over Friday 28 to Sunday 30 January, and watch the birds in your garden, from your balcony, or in your local greenspace for one hour. It doesn't matter what time you do your Big Garden Birdwatch, but you're likely to see more birds if you do it first thing in the morning.
- Count the highest number of each type of bird you see all at once during the hour, not the total number you see of those birds. For example, if you see two blackbirds and then one blackbird 15 minutes later, your count is two blackbirds.
- Record what you saw here [www.rspb.org.uk/birdwatch](http://www.rspb.org.uk/birdwatch)

When you take part in Big Garden Birdwatch, you're contributing to a snapshot that shows how our garden birds are faring. You might even see something really rare or unusual!

We are excited to relaunch our Eco-Schools initiative here at Stebon and start our eco-action soon! We are so very proud to be an Eco-Schools green flag member.

Can you think of one thing you can change at home or at school to be more eco-friendly?

### Key dates for the Spring 2022 term

**School open: Wed 5 Jan – Fri 11 Feb 2022**

Half term: Mon 14 Feb – Fri 18 Feb 2022

INSET (school closed): Mon 21 Feb 2022

**School open: Tue 22 Feb – Fri 1 Apr 2022**

Spring Holiday: Mon 4 Apr – Mon 18 Apr 2022

**School open: Tue 19 Apr – Fri 27 May 2022**

### Upcoming events:

Y4 Shakespeare performances - Thu 24th Feb 2022  
@Greenwich Theatre, 7pm

Parent consultations - w/c Tue 22 Feb 2022

Y6 Hindleap Residential - w/c Mon 28 Feb 2022

World Book Day - Thu 3 March 2022

### Start & End of the day arrangements Spring 2022

Gates open for soft start from 8.55 - 9.10am

Children will be greeted at their gates and hand sanitizer used before entering.

<b>Nursery</b>	Nursery gate, open at 8:45am
<b>Reception</b>	Peace garden gate
<b>Y1 &amp; Y2</b>	Main gate
<b>Y3 &amp; Y4</b>	MUGA/climbing frame gate
<b>Y5 &amp; Y6</b>	Office gate

Parents to all come through main gate to collect, one way route out.

<b>Nursery</b>	Nursery gate - 3.30pm
<b>Reception, Y1 &amp; Y2</b>	Classroom doors - 3.15pm
<b>Y3, Y4 &amp; Y5</b>	Playground - 3.30pm
<b>Y6</b>	Office gate - 3:30pm

### Hall available to hire

Our school hall is available during the evenings on Monday to Saturday (after school) and all day on Sunday. If you would like to enquire about booking the hall, please call the office or email [admin@stebon.org.uk](mailto:admin@stebon.org.uk)





**Nursery places  
available for  
September 2022**

Come to one of our open days:  
**Tuesday 25th January, 4pm**  
**Thursday 3rd February, 4pm**

## Stebon Primary School

Would you like your child to attend an outstanding Early Years Foundation Stage setting? If your child was born between 1st September 2018 and 31st August 2019, you can apply for a nursery place at Stebon Primary school online at

[www.eadmissions.org.uk](http://www.eadmissions.org.uk)

Full time places are also available, including through the 30 hour childcare scheme for working parents. You can check if you are eligible at

<https://www.childcarechoices.gov.uk>

For more information, or to attend one of the open days, please contact the school office - we're always happy to help. Or visit: [www.stebon.org.uk](http://www.stebon.org.uk)

Across the school,  
**pupils and adults alike show a genuine love of reading.**  
It is alive in every nook and corner of the school.  
— Ofsted 2020

Pupils are excited to come to school every day. Parents told us that their children do not want to leave after each school day because they enjoy the **contagious buzz of learning**. Pupils and adults show **a genuine love for learning**. As a result, **pupils in this school achieve highly**. — Ofsted 2020

**"Teaching is outstanding** in the Early Years Foundation Stage. Children learn in an exciting environment, rich with pictures and print.— Ofsted 2020

Pupils grow in **confidence** as they get **plenty of opportunities** to learn beyond the planned curriculum.  
— Ofsted 2020

**Ofsted**



Wallwood Street, Poplar, London E14 7AD Tel: 020 7987 4237 Email: [admin@stebon.org.uk](mailto:admin@stebon.org.uk)







## Education & Childcare for 2 Year olds

### Exciting New Provision at Stebon School

Many 2 year old children are now able to access **15 hours of free childcare** per week in the UK from the term after their 2nd birthday.

At Stebon, we are committed to giving all local children the best possible start in life. Being 2 years old is an important time in a young child's development – sometimes they need calm, quiet spaces; at others they benefit from mixing with older children and they will all need daily access to a safe, stimulating outdoor play space. We've adapted our accommodation to meet their unique needs.

**Children are eligible if their parents are in receipt of any of the following benefits:**



- \* Income Support
- \* Income-based Jobseeker's Allowance (JSA)
- \* Income-related Employment and Support Allowance (ESA)
- \* Universal Credit, & household income is £15,400 a year or less
- \* Child tax credits, & household income is £16,190 a year or less
- \* The guaranteed element of Pension Credit
- \* The Working Tax Credit 4-week run on



We have fantastic new facilities for up to 24 two year olds; a safe space where your little ones can develop their skills and independence in a secure and happy environment. The provision boasts a spacious outdoor area, healthy food, varied & exciting activities and caring & attentive staff.

**To check if you are eligible and apply please go to**  
**<https://www.childcarechoices.gov.uk/>**

Drop us an email or pop into our school office to find out more

Wallwood Street, Poplar, London E14 7AD Tel: 020 7987 4237 Email: [admin@stebon.org.uk](mailto:admin@stebon.org.uk)



Link to Twitter:

[@stebon\\_primary](https://twitter.com/stebon_primary)



## Newsletter

2021-22  
Issue 18, 28th  
January 2022

Well done to **YR Vincent Van Gogh** class for **97.9%** attendance this week!



Y5 MLK class have been working on an important mission: to design and make a prototype Space Rover for NASA's exploration of Mars.

We trialled and tested various wheels and axles and sometimes had to rethink our ideas and methods. We researched then added useful features like robotic arms and solar panels.

Great design work Y5!

### COMMUNITY CONNECTIONS

#### Monday 31 Jan, 12-2pm

12pm - 1pm: Chair Yoga for beginners & 50+

Location Zoom: Meeting ID: 891 0845 7383

Passcode: 522731

#### Tuesday 1 Feb, 12- 1pm

12pm -1pm: Health & Literacy Talk

Location Zoom: Meeting ID: 867 6553 5294

Passcode: 709027

#### Wednesday 2 Feb, 1- 2pm

1pm- 2pm: Creative Writing Workshop.

Location Zoom: Meeting ID: 898 1232 1726

Passcode: 131094

#### Thursday, 3 Feb, 12-1pm

12pm - 1pm: Piano Recital

Location Zoom: Meeting ID: 884 4751 3044

Passcode: 676473

#### Friday, 4 Feb, 7.30pm- 8.30pm

7.30pm -8.30pm: Virtual Family Quiz

Location Zoom: Meeting ID: 833 2936 9214

Passcode: 188081



Please do not attend our in person sessions if you have COVID symptoms  
Email [THCCG.CONNECTEDCOMMUNITIES@NHS.NET](mailto:THCCG.CONNECTEDCOMMUNITIES@NHS.NET)



Link to Twitter:

[@stebon\\_primary](https://twitter.com/stebon_primary)



## Newsletter

2021-22  
Issue 18, 28th  
January 2022

Well done to **YR Vincent Van Gogh** class for **97.9%** attendance this week!



### FREE AND CONFIDENTIAL MULTILINGUAL HARMFUL PRACTICES SPECIALIST HELPLINE

## 0808 169 4455

MONDAY - FRIDAY | 10:00 AM - 5:00 PM

#### Information, Guidance & Safe Referral Pathway for:

- Domestic Abuse
- Sexual Abuse
- Forced Marriage
- 'Honour-based' violence
- 'Corrective rape'
- Female Genital Mutilation
- Caste Discrimination
- Menstrual Huts
- Acid Attacks
- Faith-Based Abuse

Specialist support  
for women  
experiencing Harmful  
Practices across  
London

Providing  
advocacy and  
support to  
professionals

If you require support outside our helpline  
operating hours call National Domestic Abuse  
Helpline on 0808 2000 247

If you are in immediate danger,  
call the police on 999

**MAYOR OF LONDON**  
OFFICE FOR POLICING AND CRIME

Asian Women's Resource Centre is a Company Limited by Guarantee. Registered in  
Cardiff No: 1942925. Registered Charity No: 1049058