



### Key information & dates:

**Half term (school closed): Mon 30 May - Fri 3 June 2022**

**INSET (school closed): Mon 6 June 2022**

**Y4 & Y5 Gorsefield residential: Mon 6 June - Fri 24 June 2022**



### Spanish Day

Next Tuesday is  
Spanish day at  
Stebon! We are lucky  
to have Spanish

dance workshops on Tuesday 24<sup>th</sup> and  
Wednesday 25<sup>th</sup> May with Don Rae, who we  
had visit us last year and was great!

The 2 year old children have been  
having water play outside while  
enjoying the warm weather, a great  
way to cool off!



They have also been enjoying singing  
sessions with Eugenio today!



Having developed prototypes for a reusable Stebon  
lunch bag, Y5 Martin Luther King class pitched their  
design ideas to our Head Teacher and Eco School lead.

Added details, choice of fabric & durability were  
discussed closely. Jeremy & Robyn were both very  
impressed, well done!





### Sports Day

What a fantastic 2 days at Mile End Stadium for Sports Day!

Thank you to parents for your continued support with Sport at Stebon.



This year we had an extra special medal for Great Sporting Behaviour! It was awarded to Inaaya from Yr1 AA class. Despite breaking her collarbone last week; Inaaya made a special effort to attend her Sports Day to cheer on her friends! Congratulations Inaaya





### More of all the action!







Year 2 have been looking at different architecture. We made careful drawings of local landmarks we see around us. Then we took our drawing boards outside to draw the architecture of the school. Great work Y2 architects!



### Eco-Protector tip #4!

Bothered by air pollution? Walk, scoot or cycle instead of driving. Not only will you be cutting down on air pollution but you will be getting fit too! Did you know that using public transport e.g. bus or train instead of driving, would mean you could cut your greenhouse gas emissions by half?



### Start & End of the day arrangements

Gates open for soft start from 8.55 - 9.10am

Children will be greeted at their gates and hand sanitizer used before entering

<b>Nursery</b>	Nursery gate, open at 8:45am
<b>Reception</b>	Peace garden gate
<b>Y1 &amp; Y2</b>	Main gate
<b>Y3 &amp; Y4</b>	MUGA/climbing frame gate
<b>Y5 &amp; Y6</b>	Office gate

Parents to all come through main gate to collect, one way route out.

<b>Nursery</b>	Nursery gate - 3.30pm
<b>Reception, Y1 &amp; Y2</b>	Classroom doors - 3.15pm
<b>Y3, Y4 &amp; Y5</b>	Playground - 3.30pm
<b>Y6</b>	Office gate - 3:30pm

### Key dates for Summer 2022

**School open: Tue 19 Apr – Fri 27 May 2022**

May Bank Holiday: Mon 2 May 2022

Polling day: Thur 5 May 2022

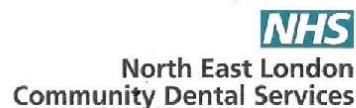
Half term: Mon 30 May – Fri 3 June 2022

INSET (school closed): Mon 6 June 2022

**School open: Tue 7 June – Fri 22 July 2022**

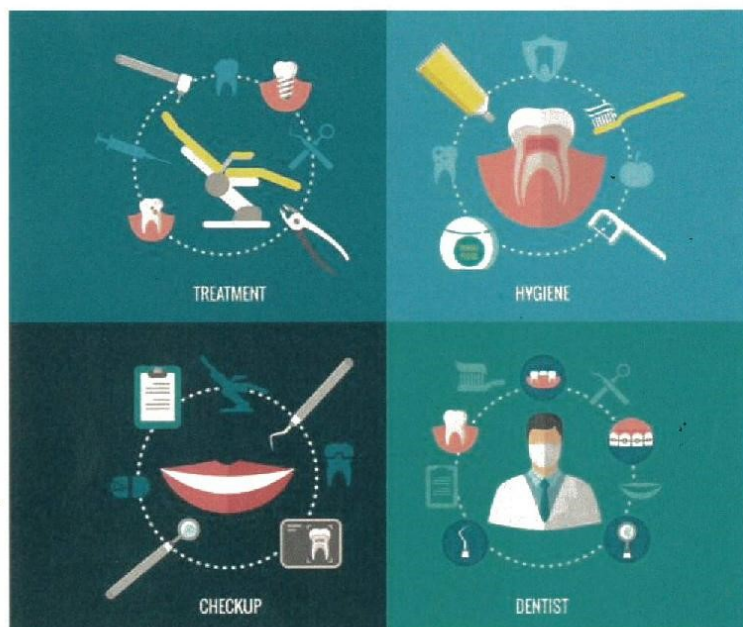
Eid-ul-Adha TBC closure: Mon 11 July 2022

2022-2023 term dates can be found on our website: <https://www.stebon.org.uk/School-Timetable/>



***The Dental Team will be at your school  
to apply the second coat of fluoride on***

**Friday 27<sup>th</sup> May 2022**



**Please Note: Only children who had the first  
application will receive their second one at  
this visit**





## QUEEN'S PLATINUM JUBILEE

### Menu

**Served on:**

**Wednesday 8th June 2022**

**1 Chicken Tender**

**1 Mini Chicken Sausage**

**1/2 Wrap**

**1/2 Sandwich**

**1 Mini Roll**

**1/2 Vegan Sausage Roll**

**Salad Bar:**

**Coleslaw**

**Potato Salad with Spring Onion**

**Beetroot and Grated Carrot**

**Vegetable Sticks:**

**Carrot, Cucumber, Olives,**

**Cherry Tomatoes, Breadsticks, Houmous**

**Iced Sponge with Glazed Cherries**

**Mixed Berry and Grapes Fruit Pots**





## Adult Learning Within Reach



The [Workers Educational Association](#) is the UK's largest adult education charity with over 50,000 students each year. We offer a very wide [range of courses](#). You must be over 19 to study with us.

### Start your journey as a Community Interpreter

- Use your language skills
- Learn to become a community interpreter
- Become a volunteer or find employment

Do you speak two or more languages confidently? Can you read and write in your languages? Why not become a Community Interpreter, and support other people who wish to access services, information, benefits, work and other opportunities.

Our Community Interpreting courses teach the skills you need to begin volunteering and working as an interpreter. They start with Level 1 and progress to Level 2 and 3.

This term we are offering a taster, initial assessment and Level 1 course to enable you to start your journey in Community Interpreting. We will offer accredited Level 2 courses from September 2022. Complete Level 1 successfully to ensure this is a pathway you want to follow.

**What you will learn:** On this term's Level 1 course 'Understanding the Role of a Community Interpreter', explore public services, the role of the interpreter, boundaries, confidentiality, equality and diversity.

**Online study:** We provide live classes online with one of our highly respected tutors in a virtual classroom. You will need a stable internet connection and a tablet or laptop to take part. Please talk to us if your equipment is a barrier.

**Cost:** Courses are free.

**Interested?** Enrol for a Taster and Initial Assessment to find out more, and we'll advise you.

### Courses this term

#### What is community interpreting?

- Course number: C2423685
- 23/05/22
- Mon 09.30-11.30am
- 1 session x 2 hours
- £0.00 / Free
- Enrol online <https://enrolonline.wea.org.uk/Online/2021/CourseInfo.aspx?r=C2423685>
- Or ring WEA 0300 303 3464 (Mon—Fri, 9-5pm)

#### Community Interpreting Initial Assessment

- Course number: C2423686
- 26/05/22 and 30/05/22
- Thurs or Mon 09.30-12.30pm
- You attend 1 session x 3 hours
- £0.00 / Free
- Enrol online <https://enrolonline.wea.org.uk/Online/2021/CourseInfo.aspx?r=C2423686>
- Or ring WEA 0300 303 3464 (Mon—Fri, 9-5pm)

#### Understanding the Role of a Community Interpreter (Level 1)

- Course number: C2423684
- PIN to enrol supplied after assessment
- 13/06/22 to 21/07/22
- Mon and Thurs 09.30-11.30am
- 12 sessions x 2 hours
- £0.00 / Free
- Enrol online <https://enrolonline.wea.org.uk/Online/2021/CourseInfo.aspx?r=C2423684>
- Or ring WEA 0300 303 3464 (Mon—Fri, 9-5pm)

**Questions?** Please talk to Children and Family Centre or School staff, or email WEA organiser Paul Chodha ([pchodha@wea.org.uk](mailto:pchodha@wea.org.uk))

**We look forward to seeing you!**



SUPPORTED BY  
**MAYOR OF LONDON**



The WEA is a charity registered in England and Wales (no. 1112775) and Scotland (no. SC039239). Workers' Educational Association is a company limited by guarantee registered in England and Wales (Company no. 2806910). Registered address: 4 Luke Street, London, EC2A 4XW.





### Adult Learning Within Reach



## Digital Skills courses from the Workers Educational Association

We are the UK's largest adult education charity and offer a very wide range of courses. Our students over 19 and resident in the UK. These courses will improve your technical skills for work. You'll need a laptop and internet to study online.

### Improve your Employability Skills using Word

- Course number: C2423630
- Online learning
- From 08/06/22 to 13/07/22
- Wed 10.00-12.00
- 6 sessions x 2 hours
- £0.00 / Free
- Info / enrol online: <https://enrolonline.wea.org.uk/Online/2021/CourseInfo.aspx?r=C2423630>
- Or call WEA 0300 303 3464 (Mon—Fri, 9-5pm)
- Questions? Ring WEA 0300 303 3464

#### On this course, learn to:

- Use mouse and keyboard
- Create a document, type, save, print
- Insert an image and format
- Set page margins and orientation
- Understand ribbon icons
- Insert a table, use borders and shadings
- Create headers, footers, use automatic fields

### National Level 2 Certificate in Digital Promotion for Business

- Course number: C2423710
- Online learning
- From 11/06/22 to 02/08/22
- On Mon 11-4pm, Wed 11-4pm, Sat 11-4pm
- 24 sessions x 5 hours
- £0.00 / Free
- More info online <https://enrolonline.wea.org.uk/Online/2021/CourseInfo.aspx?r=C2423630>
- To enrol, call WEA 0300 303 3464 (Mon—Fri, 9-5pm) or email: [courseenquiries@wea.org.uk](mailto:courseenquiries@wea.org.uk)

This course introduces key concepts of digital promotion. It will give you the tools needed to promote a business through social media.

#### On this course, learn to:

- Describe a range of digital promotional activities
- Identify the digital promotional goals for a business
- Consider how to generate online traffic for a business
- Determine the role of digital and offline media in promoting a business
- Create content for an organisation's digital promotion

We look forward to seeing you!



SUPPORTED BY

**MAYOR OF LONDON**



The WEA is a charity registered in England and Wales (no. 1112775) and Scotland (no. SC039239). Workers' Educational Association is a company limited by guarantee registered in England and Wales (Company no. 2806910). Registered address: 4 Luke Street, London, EC2A 4XW.