



# Stebon Primary School's Burdett Gazette



Read our most recent **Ofsted** report [here](#)

Website: [www.stebon.org.uk](http://www.stebon.org.uk)

twitter: [@stebon\\_primary](https://twitter.com/stebon_primary)

19.01.2024

Issue 16

## Key dates:

Mon 8 Jan - Fri 9 Feb 2024:  
School open for Spring Term

Fri 9 Feb 2024: Y4 Shakespeare  
Schools Festivals Performance

Mon 12 Feb - Fri 16 Feb 2024:  
Half term holiday

Mon 19 Feb 2024: Staff INSET  
day - School closed

Tue 20 Feb - Thu 28 Mar 2024:  
School open for Spring Term

Oct 2023 - Apr 2024 lunch menu

PE timetable

Term dates for 2022/23 & 2023/24

Information: Playground Changes

**Congratulations to Y4 Helen Keller  
class who had 93% attendance  
this week!**

## Attendance

**Every day matters – Every  
minute counts!**

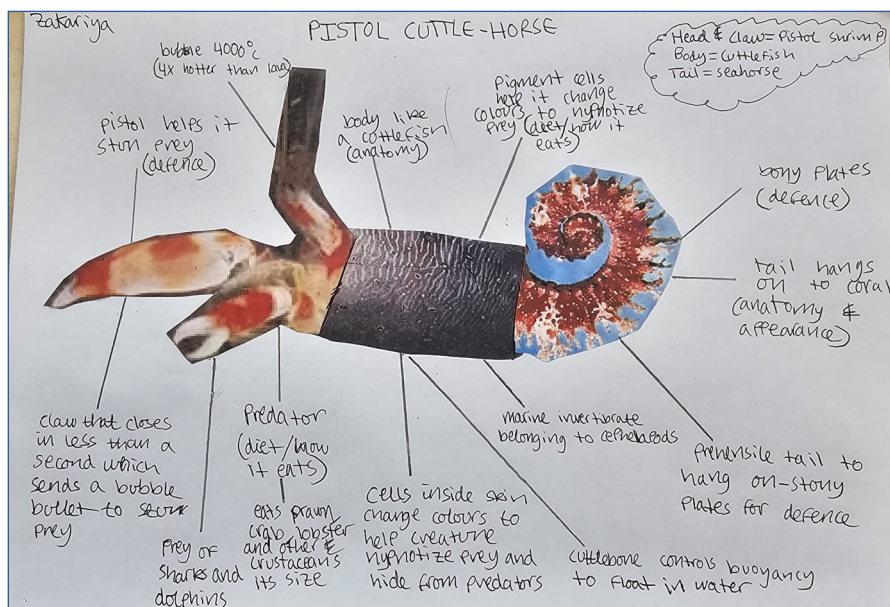
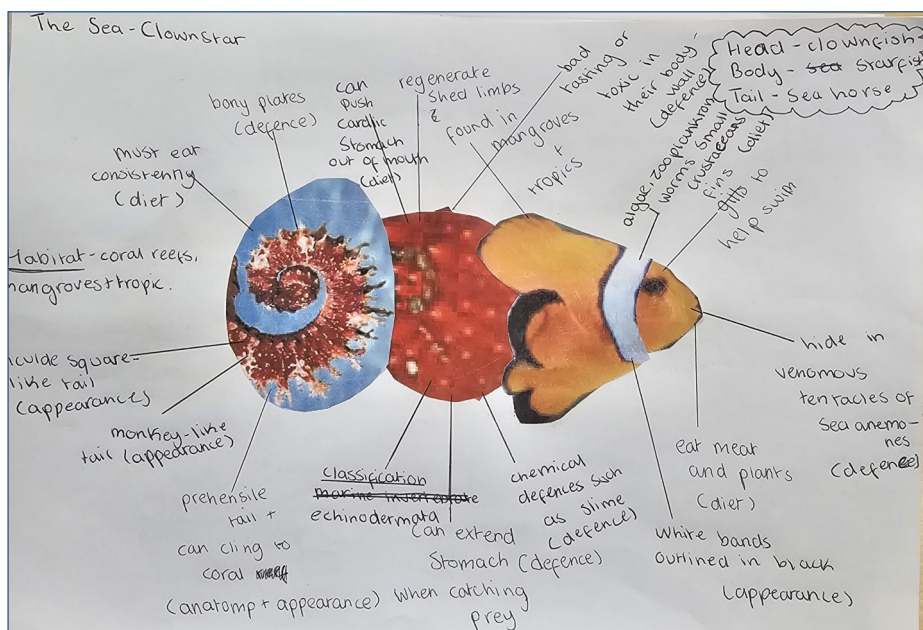
Stebon's magic number is  
**97** This is because we are  
aiming for 97% attendance.

**This week's whole school  
attendance was 95%**

Come on Stebon!



**Year 6** has been creating hybrid sea creatures and will be writing a non-chronological report about these fascinating discoveries. Here is some work from David Attenborough class.



We are starting a new and exciting woodworks project in **Reception** and we need your help!

We are looking to build up our supply of pine offcuts and softwood.

If you or anyone you know can donate some, please let us know at [admin@stebon.org.uk](mailto:admin@stebon.org.uk).





# Stebon Primary School's Burdett Gazette



Read our most recent [Ofsted](#)

Website: [www.stebon.org.uk](http://www.stebon.org.uk)

twitter: [@stebon\\_primary](https://twitter.com/stebon_primary)

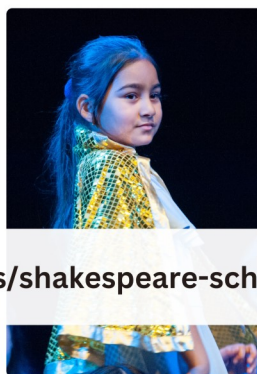
19.01.2024

Issue 16

## SSF

### TICKETS ON SALE NOW

9TH FEB - GREENWICH THEATRE - 7:30PM



<https://greenwichtheatre.org.uk/events/shakespeare-schools-festival-feb-24/>

EAST LONDON MOSQUE  LONDON MUSLIM CENTRE

Are You A Carer Of A Child With  
**Autism / ADHD?**  
Let's Meet up!

Peer Support Group

1<sup>st</sup> & 3<sup>rd</sup> Thursday  
of every month  
10am-12pm

2<sup>nd</sup> Floor Meeting Room  
Maryam Centre  
(Use Entrance 4)  
London E1 1JU

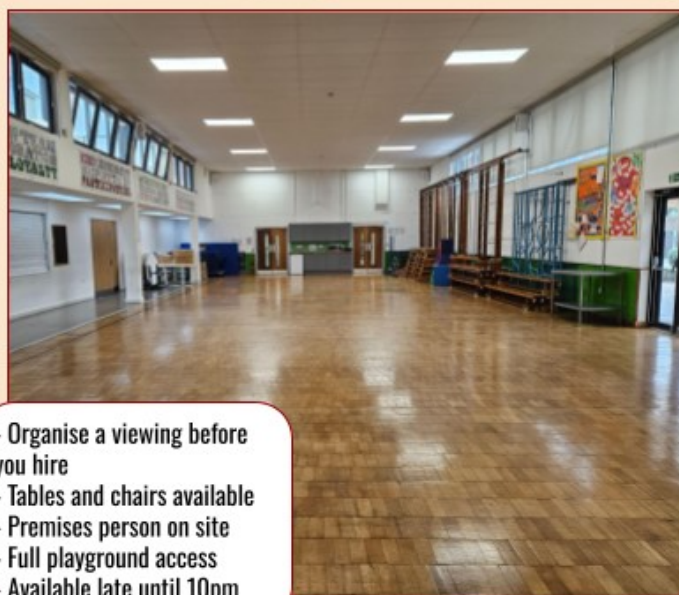
Starting from June 2023  
During term time and for women only

STAY CONNECTED  
f t i y d

MORE INFO  
E: [info@maryamcentre.org.uk](mailto:info@maryamcentre.org.uk)  
T: 020 7650 3022

## HALL FOR HIRE

Minimum hire period of 1 hour  
£45 per hour & £50 deposit\*  
Community lettings\*



- Organise a viewing before you hire
- Tables and chairs available
- Premises person on site
- Full playground access
- Available late until 10pm

Email [admin@stebon.org.uk](mailto:admin@stebon.org.uk) or call on 0207 987 4237 to find out more



**Artsmark  
Gold Award**  
Awarded by Arts  
Council England



# SWIM SCHOOL SHORT COURSES

Visit [better.org.uk/swimming-lessons](https://better.org.uk/swimming-lessons)  
for more information



**BETTER**



# WINTER HALF-TERM CAMP

FREE FOR CHILDREN AND YOUNG PEOPLE AGES 4-18 YEARS OLD



RADOJUNKIE

**TUESDAY FEB 13TH**

10:00 AM - 11:30 AM - FREE

**WEDNESDAY FEB 14TH**

10:00 AM - 11:30 AM - FREE

**THURSDAY FEB 15TH**

10:00 AM - 11:30 AM - FREE

**LIMITED  
AVAILABILITY**

**BOOK NOW**



**LOCATION: ROMAN ROAD  
ADVENTURE PLAYGROUND**



**CHIPPING  
WHARF**  
FISH & CHIPS



*Notorious*

# SEND SUPPORT GROUP



- **Come and meet other parents**
- **Share information**
- **Younger children welcome**
- **Monthly guest speakers**
- **No diagnosis needed**

**This terms sessions are:**

**January 11th and 25th**

**February 8th and 22nd**

**March 14th and 28th**

**10am -12pm**

**For more information contact:**

**Tower Hamlets & City SEND IASS**

**30 Greatorex Street, Whitechapel, London E1 5NP**

**020 7364 6489**



Tower Hamlets and City  
**SEND IASS**

Your guide to information and  
services for families in Tower Hamlets



**LOCAL OFFER**  
@thlocaloffer localoffer.towerhamlets.co.uk

# Triple P for Baby

**Are you expecting a baby or are you a new parent with a baby under 12 months?**

## Join the Triple P for Baby programme

The programme will help you to:

- Adjust to life with your new baby
- Build a close relationship with your baby
- Support your baby's learning and development

## Course structure

- Four weekly, classroom-based group sessions with other new parents
- Plus four individual consultations with a practitioner to reflect on your progress

## Course content

- Creating the best environment for your baby
- Responding to your baby's cues
- Handling crying and comforting your baby
- Promoting good sleep habits
- Helping your baby learn and develop
- Taking good care of yourself as a new parent

**Wednesdays**  
**9.30am-12.30pm**  
**17 January 2024 –**  
**20 March 2024**

Overland Children's Centre,  
60 Parnell Road, E3 2RU  
Crèche available

For more details and to book your place, email:  
[PAE@towerhamlets.gov.uk](mailto:PAE@towerhamlets.gov.uk)

